



WALL and FLOOR: Farge Fine RR 15 600x1200 / 24"x48" NAT RECT

NORR FINE

The iconic texture inspired by Ceppo di Gré stone, with an attractively irregular pattern, gains a new version with a thicker grain and a striking material component.

A micro effect for a highly appealing mood, offering some superb ideas to bring a sophisticated, personal touch to every setting.



WALL: JOLIE Calacatta Venà Antica JL 03 1200x2730 / 48"x110" LUC RECT
FLOOR: Melk Fine RR 14 600x600 / 24"x24" NAT RECT



FLOOR: Farge Fine **RR 15** 600x600 / 24"x24" NAT RECT
WALL: Mattoncino Farge Fine **RR 15** 300x300 / 12"x12" NAT

COLORI

Colours | Farben | Couleurs | Colores | Цветов | 种颜色



Vit Fine
RR 11



Grå Fine
RR 12



Svart Fine
RR 13



Melk Fine
RR 14



Farge Fine
RR 15



FLOOR and WALL: Grå Fine **RR 12** 600x1200 / 24"x48" NAT RECT
REAR WALL: WANDERLUST Four Seasons **WA 13** 1200x2780 / 48"x110" LUC RECT
FURNITURE: JOLIE Calacatta Select **JL 02** LUC RECT + MIROIR Gold

COLORI

Colours | Farben | Couleurs | Colores | Цветов | 种颜色

VIT FINE RR 11



Formati Nominali Nominal Sizes		Superficie Finish	Spessore mm Thickness mm
600x600 / 24"x24"		NAT RECT	9
600x1200 / 24"x48"		NAT RECT	9

Stucchi consigliati Recommended grouts		
KERAKOLL	06	
MAPEI	110 Manhattan 2000	
LATICRETE	88 Silver Shadow	



MELK FINE RR 14

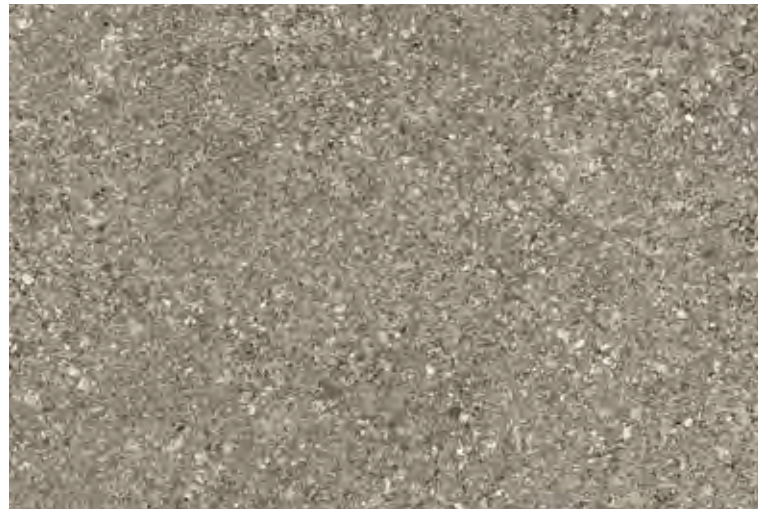


Formati Nominali Nominal Sizes		Superficie Finish	Spessore mm Thickness mm
600x600 / 24"x24"		NAT RECT	9
600x1200 / 24"x48"		NAT RECT	9

Stucchi consigliati Recommended grouts		
KERAKOLL	20	
MAPEI	111 Grigio Argento	
LATICRETE	88 Silver Shadow	



GRÅ FINE RR 12



Formati Nominali Nominal Sizes		Superficie Finish	Spessore mm Thickness mm
600x600 / 24"x24"		NAT RECT	9
600x1200 / 24"x48"		NAT RECT	9

Stucchi consigliati Recommended grouts		
KERAKOLL	08	
MAPEI	112 Grigio Medio	
LATICRETE	78 Sterling Silver	



FARGE FINE RR 15

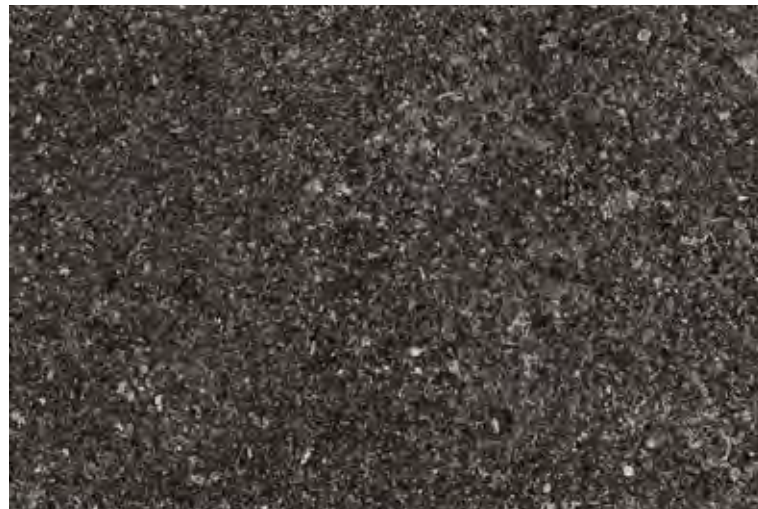


Formati Nominali Nominal Sizes		Superficie Finish	Spessore mm Thickness mm
600x600 / 24"x24"		NAT RECT	9
600x1200 / 24"x48"		NAT RECT	9

Stucchi consigliati Recommended grouts		
KERAKOLL	08	
MAPEI	113 Grigio Cemento	
LATICRETE	78 Sterling Silver	



SVART FINE RR 13



Formati Nominali Nominal Sizes		Superficie Finish	Spessore mm Thickness mm
600x600 / 24"x24"		NAT RECT	9
600x1200 / 24"x48"		NAT RECT	9

Stucchi consigliati Recommended grouts		
KERAKOLL	11	
MAPEI	114 Antracite	
LATICRETE	45 Raven	



MY NOTES

.....

.....

.....

.....

.....

Maggiori informazioni
More information



RIASSUNTIVO FORMATI ED IMBALLI

Summary of sizes and packaging | Übersicht über Formate und Verpackungen | Récapitulatif formats et emballages
Sinóptico de formatos y embalajes | Краткая информация о форматах и упаковках | 规格和包装概述

± 9 mm

Formati Nominali Nominal Sizes	600x600 24"x24"	600x1200 24"x48"
Tutti i formati sono rettificati. All sizes are rectified.		
Superficie Finish	NAT	NAT
VIT FINE RR 11	■	■
GRÅ FINE RR 12	■	■
SVART FINE RR 13	■	■
MELK FINE RR 14	■	■
FARGE FINE RR 15	■	■
Peso lordo per scatola Gross weight per box	22,16	30,00
Pezzi per scatola Pieces for box	3	2
mq. scatola sqm. box	1,08	1,44
Scatole / Full pallet boxes / Full pallet	40	35
mq. pallet sqm. pallet	43,20	50,40

PEZZI SPECIALI

Special pieces | Sonderstücke | Pièces spéciales | Piezas especiales | специальные изделия | 特殊件

	Battiscopa*	Gradino A*	Gradino A*	Gradino B ang.	Gradino B	Gradino B	Gradino G
Pezzi speciali Special pieces	72x600 27/8"x24"	300x600 12"x24"	330x1200 13 1/8"x48"	330x330 13 1/8"x13 1/8"	330x600 13 1/8"x24"	330x1200 13 1/8"x48"	300x600 12"x24"
Superficie Finish	NAT	NAT	NAT	NAT	NAT	NAT	NAT
VIT FINE RR 11	■	■	■	■	■	■	■
GRÅ FINE RR 12	■	■	■	■	■	■	■
SVART FINE RR 13	■	■	■	■	■	■	■
MELK FINE RR 14	■	■	■	■	■	■	■
FARGE FINE RR 15	■	■	■	■	■	■	■
Pezzi per scatola Pieces for box	10	7	4	4	4	2	7

* Finitura a becco di civetta | One-round edge shaping | Ausführung mit Eckabrundung | Façonnage à bord rond | Acabado canto romo | Плитка с завалом | 鹰嘴边缘处理

DECORI

Decors | Dekore | Decors | Decoros | Декоры | 装饰砖

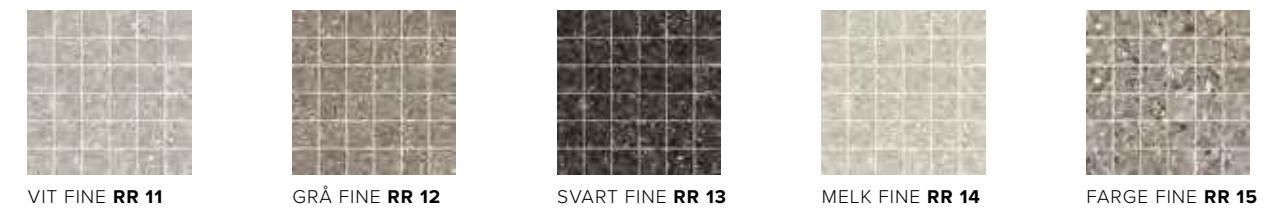
Patchy NAT
400x347 / 15 3/4"x13 5/8"



Mattoncino NAT
300x300 / 12"x12"
Tessere 24x48 / 1"x2"



Mosaico 36T NAT
300x300 / 12"x12"
Tessere 48x48 / 2"x2"



Portnoy NAT
300x300 / 12"x12"



Pezzi per scatola
Pieces for box

Mattoncino	6
Mosaico 36T	6
Portnoy	6
Patchy	6

MATTONCINO, MOSAICO 36T, PORTNOY, PATCHY:

Decoro su rete | Mesh-backed decoration | Dekor auf netz | Décor sur filet | Decoración en red | Декор в сету | 网板背帖装饰件



WALL: Farge Fine **RR 15** 600x1200 / 24"x48" NAT RECT
 FLOOR: Farge Fine **RR 15** 600x600 / 24"x24" NAT RECT

CARATTERISTICHE TECNICHE

Technical specifications | Technische Eigenschaften | Caractéristiques techniques | Características técnicas | Технические характеристики | 技术特征

STANDARD EN 14411 - G

	CARATTERISTICHE TECNICHE TECHNICAL DATA TECHNISCHE DATEN CARACTERISTIQUES TECHNIQUES CARACTERÍSTICAS TÉCNICAS ТЕХНИЧЕСКИЕ ХАРАКТЕРИСТИКИ 技术特征	NORMA STANDARD NORM NORME NORMA НОРМА СТАНДАРТА	VALORI PRESCRITTI DALLE NORME EN 14411 - G INTERNATIONAL STANDARDS EN 14411 - G INTERNATIONALE NORMWERTE EN 14411 - G VALEURS PREVUES PAR LES NORMES EN 14411 - G VALORES PREVISTOS POR LAS NORMAS EN 14411 - G ПРЕДУСМОТРЕННЫЕ СТАНДАРТОМ EN 14411-G EN 14411 - G标准规定值	*VALORE MEDIO MIRAGE MIRAGE AVERAGE VALUE MIRAGE MITTELWERT VALEURS MOYEN MIRAGE VALOR MEDIO MIRAGE СРЕДНЕЕ ЗНАЧЕНИЕ MIRAGE MIRAGE平均值
	CARATTERISTICHE DIMENSIONALI - SIZE CHARACTERISTICS - MASSEIGENSCHAFTEN DETERMINATION DES CARACTERISTIQUES DIMENSIONNELLES - CARACTERÍSTICAS DIMENSIONALES - РАЗМЕРНЫЕ ХАРАКТЕРИСТИКИ - 尺寸特征			
	LATI SIDES - SEITEN COTES - CANTOS РАЗМЕРЫ СТОРОН - 侧边	EN ISO 10545-2	± 0,3% MAX (± 1,0 mm MAX)	CONFORME COMPLYING
	SPESSORE THICKNESS - DICKE EPAISSEUR - ESPESOR ТОЛЩИНА - 厚度	EN ISO 10545-2	± 5,0% MAX (± 0,5 mm MAX)	CONFORME COMPLYING
	RETTILINEITÀ DEGLI SPIGOLI STRAIGHTNESS OF SIDES - GERADLINIGKEIT DER KANTEN RECTITUDE DES ARETES - RECTITUD DE LOS CANTOS КОСОУГОЛЬНОСТЬ - 边角平直度	EN ISO 10545-2	± 0,3% MAX (± 0,8 mm MAX)	CONFORME COMPLYING
	ORTOGONALITÀ RECTANGULARITY - RECHTWINKLIGKEIT PERPENDICULARITÉ - ORTOGONALIDAD КРИВИЗНА СТОРОН - 直角度	EN ISO 10545-2	± 0,3% MAX (± 1,5 mm MAX)	CONFORME COMPLYING
	PLANARITÀ SURFACE FLATNESS - EBENFLÄCHIGKEIT PLANEITE DE SURFACE - PLANEIDAD КРИВИЗНА ЛИЦЕВОЙ ПОВЕРХНОСТИ - 平整度	EN ISO 10545-2	± 0,4% MAX (± 1,8 mm MAX)	CONFORME COMPLYING
	ASSORBIMENTO D'ACQUA WATER ABSORPTION - WASSERAUFNAHME ABSORPTION D'EAU - ABSORCIÓN DE AGUA ВОДОПОГЛОЩЕНИЕ - 吸水率	EN ISO 10545-3	≤ 0,5%	≤ 0,1%
	RESISTENZA ALLA FLESSIONE FLEXION RESISTANCE - BIEGEFESTIGKEIT RESISTANCE A LA FLEXION - RESISTENCIA A LA FLEXIÓN ПРЕДЕЛ ПРОЧНОСТИ ПРИ ИЗГИБЕ - 抗弯强度	EN ISO 10545-4	S ≥ 700 N (< 7,5 mm) S ≥ 1.300 N (> 7,5 mm) R ≥ 35 N/mm².	≠ 9 mm: S ≥ 2.400N R ≥ 48 N/mm²
	RESISTENZA ALL'URTO IMPACT RESISTANCE - STOSSFESTIGKEIT RESISTANCE AUX CHOCS - RESISTENCIA A LOS GOLPES УДАРСТОЙКОСТЬ - 抗冲击强度	EN ISO 10545-5	VALORE DICHIARATO DECLARED VALUE	> 0,80
	RESISTENZA ALL'ABRASIONE ABRASION RESISTANCE - ABRIEBFESTIGKEIT RESISTANCE A L'ABRASION - RESISTENCIA A LA ABRASIÓN СТОЙКОСТЬ К ИСТИРАНИЮ - 耐磨强度	EN ISO 10545-6	≤ 175 mm³	< 150 mm³
	COEFFICIENTE DI DILATAZIONE TERMICA LINEARE COEFFICIENT OF LINEAR THERMAL-EXPANSION - LINEARER WÄRMEAUDEHNUNGSKOEFFIZIENT COEFFICIENT DE DILATATION THERMIQUE LINEAIRE - COEFICIENTE DE DILATACIÓN TÉRMICA LINEAL КОЭФФИЦИЕНТ ЛИНЕЙНОГО ТЕРМИЧЕСКОГО РАСШИРЕНИЯ - 线性热膨胀系数	EN ISO 10545-8	-	α=6,5x10 ⁻⁶ °C ⁻¹
	RESISTENZA AGLI SBALZI TERMICI RESISTANCE TO THERMAL SHOCKS - BESTÄNDIGKEIT GEGEN TEMPERATURSCHWANKUNGEN RESISTANCE AUX CHOCS THERMIQUES - RESISTENCIA A LOS CHOQUES TÉRMICOS СТОЙКОСТЬ К ПЕРЕПАДАМ ТЕМПЕРАТУРЫ - 耐热突变性	EN ISO 10545-9	TEST SUPERATO SECONDO EN ISO 10545-1 PASS ACCORDING EN ISO 10545-1	NESSUN DANNO NO DAMAGE
	RESISTENZA AL GELO FROST RESISTANCE - FROSTBESTÄNDIGKEIT RESISTANCE AU GEL - RESISTENCIA AL HIELO МОРОЗОСТОЙКОСТЬ - 耐冻性	EN ISO 10545-12	TEST SUPERATO SECONDO EN ISO 10545-1 PASS ACCORDING EN ISO 10545-1	NESSUN DANNO NO DAMAGE
	RESISTENZA ALL'ATTACCO CHIMICO RESISTANCE TO CHEMICALS - CHEMIKALIENBESTÄNDIGKEIT RESISTANCE A L'ATTAQUE CHIMIQUE - RESISTENCIA QUÍMICA ХИМИЧЕСКАЯ СТОЙКОСТЬ - 耐化学品作用	EN ISO 10545-13	B MIN.	A LA HA
	RESISTENZA ALLE MACCHIE RESISTANCE TO STAINS - FLECKENBESTÄNDIGKEIT RESISTANCE AUX TACHES - RESISTENCIA A LAS MANCHAS УСТОЙЧИВОСТЬ К ПЯТНООБРАЗОВАНИЮ - 防污性	EN ISO 10545-14	VALORE DICHIARATO DECLARED VALUE	5
	CESSIONE DI PIOMBO E CADMIO LEAD AND CADMIUM DISCHARGE - ABGABE VON BLEI UND CADMIUM PERTE DE PLOMB ET CADMIUM - CESIÓN DE PLOMO Y CADMIO ВЫДЕЛЕНИЕ СВИНЦА И КАДМИЯ - 铅和镉的排放	EN ISO 10545-15	VALORE DICHIARATO DECLARED VALUE	< AL LIMITE DI RILEVAMENTO < THAN INSTRUMENT LIMIT
				NAT
		DM 236/89 BCRA	> 0,40	> 0,40
		ANSI A326.3	Wet and Dry	≥ 0,42
		AS 4586	-	P2
		DIN 51130	-	R10
		DIN 51097	-	A
		UNE 41901	≥ CL1	CL2
		BS 7976 sl.96-4S	Wet and Dry	≥ 0,36
		BS 7976 sl.55-TRL	Wet and Dry	-
	SCIVOLOSITÀ SKID RESISTANCE - RUTSCHWERT GLISSANCE - ADHERENCIA СКОЛЬЗКОСТЬ - 防滑性			

Per i certificati specifici, contattare Mirage SpA - For specific certificates, please contact Mirage SpA - Für die speziellen Zertifikate wenden Sie sich bitte an Mirage SpA - Pour les certificats spécifiques, veuillez contacter Mirage SpA
 Para los certificados específicos, contactar Mirage SpA - Для сертификатов обращайтесь в компанию Mirage SpA - 关于具体的证书, 请联系Mirage SpA公司