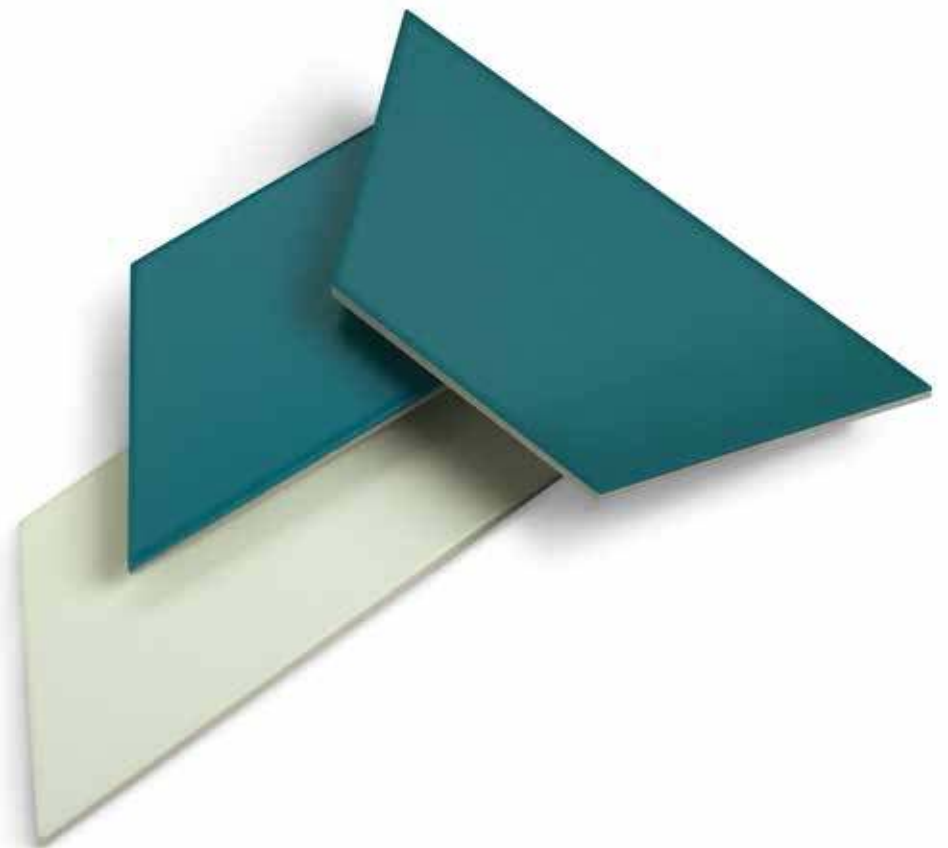


Trapez matt



Trapez matt

La forma geometrica dà il ritmo alla composizione.
Trapez è una collezione pensata per rivestimento,
basata su una modularità di elementi trapezoidali da 23x10,
che riescono a creare insoliti effetti visivi.
L'ampia gamma di colori permette di giocare
con composizioni tono su tono o contrasti decisi
per creare sempre texture di grande effetto.

Its geometric shapes bring rhythm to composition.
Trapez is a collection of modular, 23x10,
trapezoid tiles intended for wall covering
that create unique visual effects.
The wide range of colours allows you to experiment
with tone on tone or clear contrasts,
for extremely striking textures.



Talco
23x10 9"x4"



Trapez matt 3



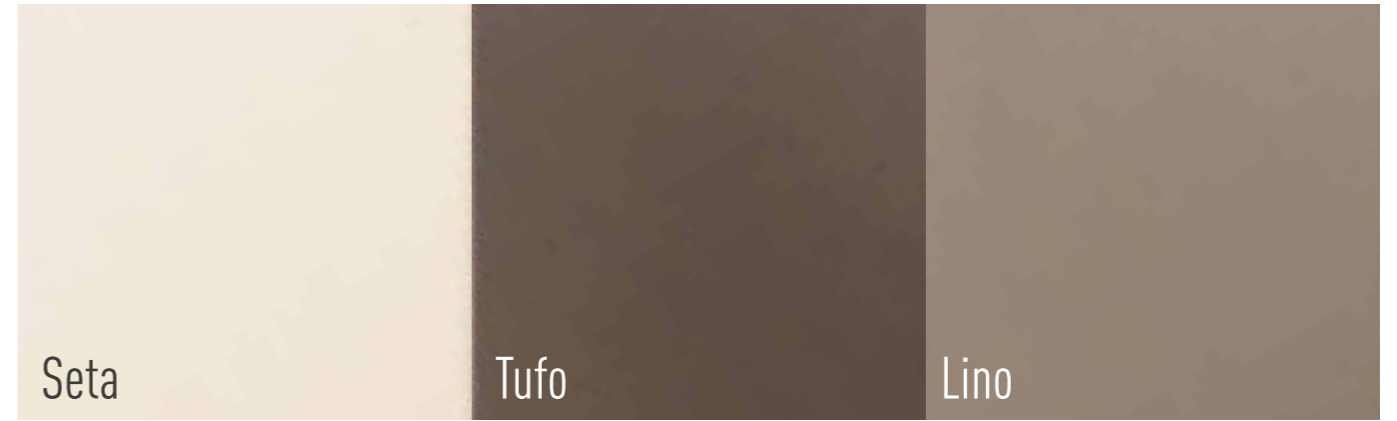
TRA1672 23x10 9"x4"



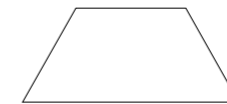
TRA1673 23x10 9"x4"



TRA1679 23x10 9"x4"



TRA1671 23x10 9"x4"



TRA1678 23x10 9"x4"



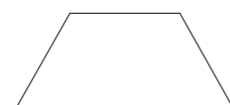
TRA1677 23x10 9"x4"



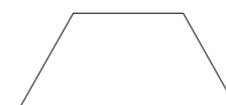
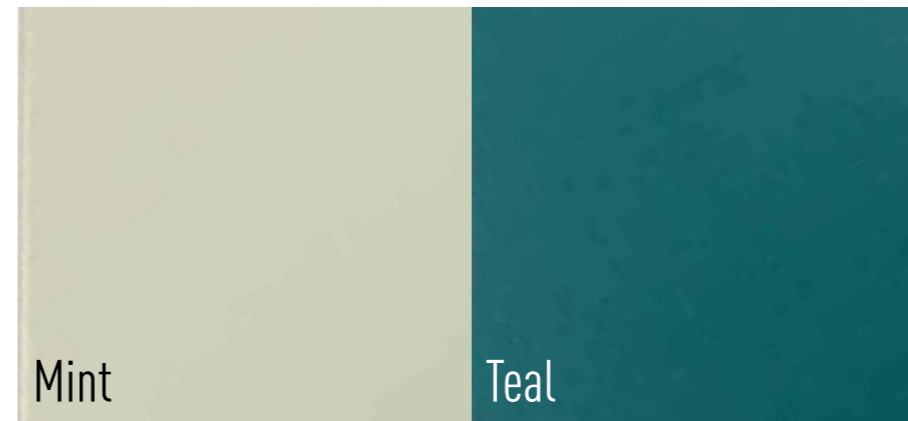
TRA1670 23x10 9"x4"



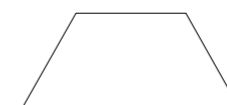
TRA1683 23x10 9"x4"



TRA1681 23x10 9"x4"

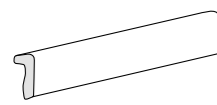


TRA1680 23x10 9"x4"



TRA1682 23x10 9"x4"

Pezzi speciali disponibili in tutti i colori | Special trims available in all colours



Terminale Trapez
4x30 1.6"x12"



Ang. Esterno Terminale Trapez
2x4 0.8"x1.6"



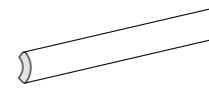
Ang. Specchio Terminale Trapez
4x4 1.6"x1.6"



Matita Trapez
2x30 0.8"x12"



Sguscio Matita Trapez
2x2 0.8"x0.8"



Quarter Round Trapez
3x30 1.2"x12"



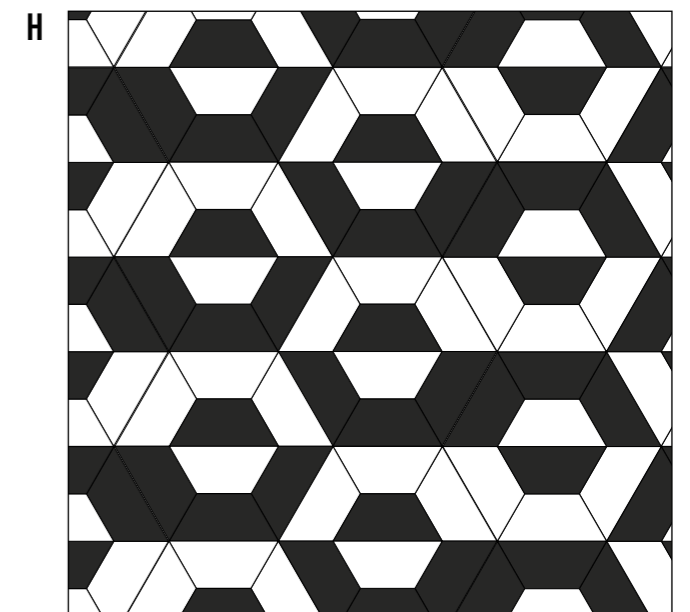
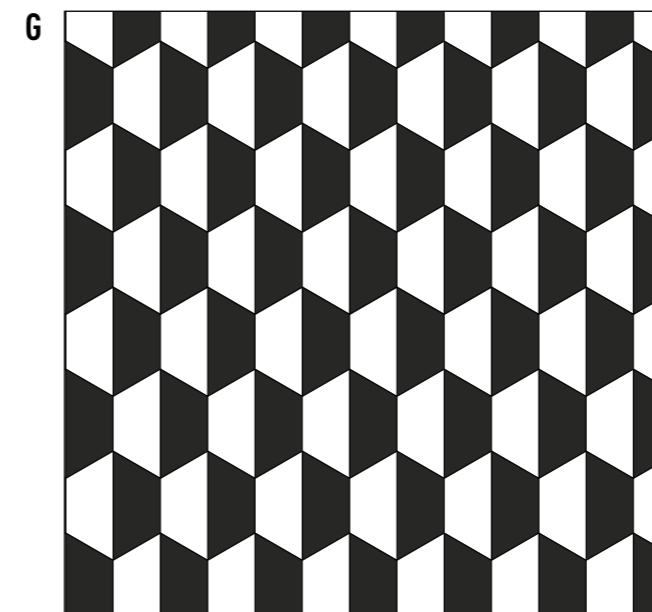
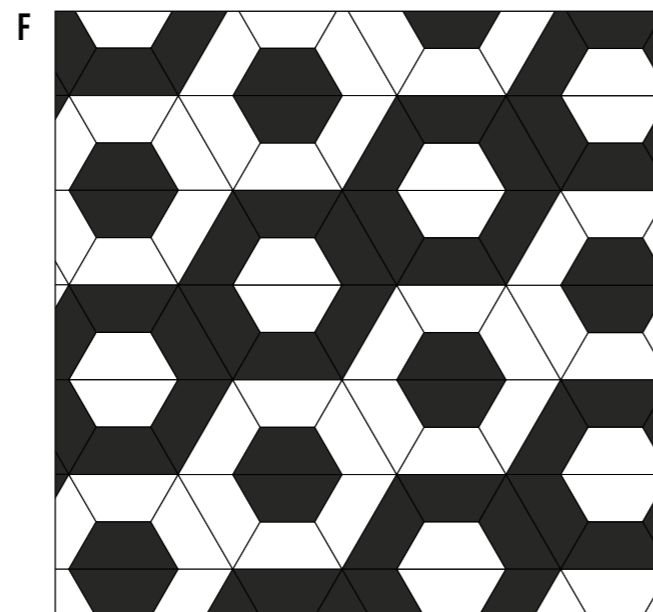
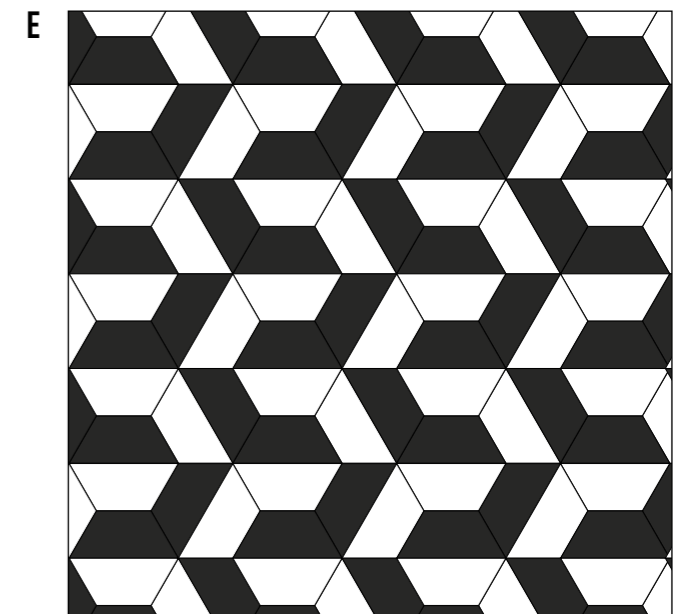
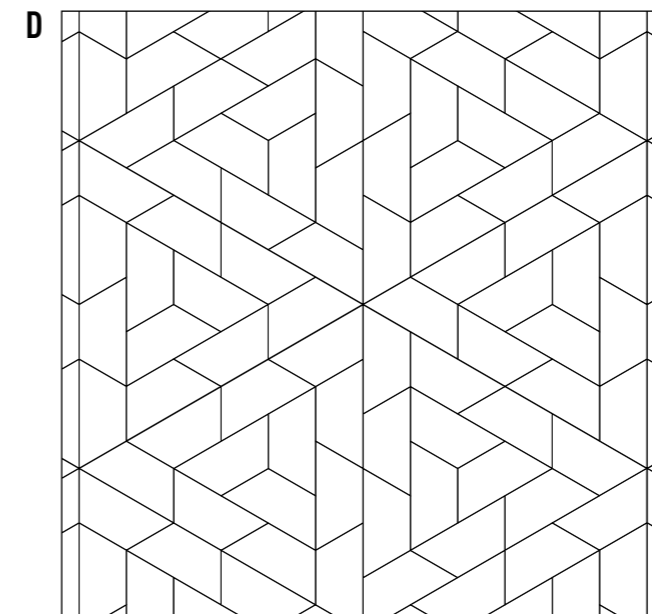
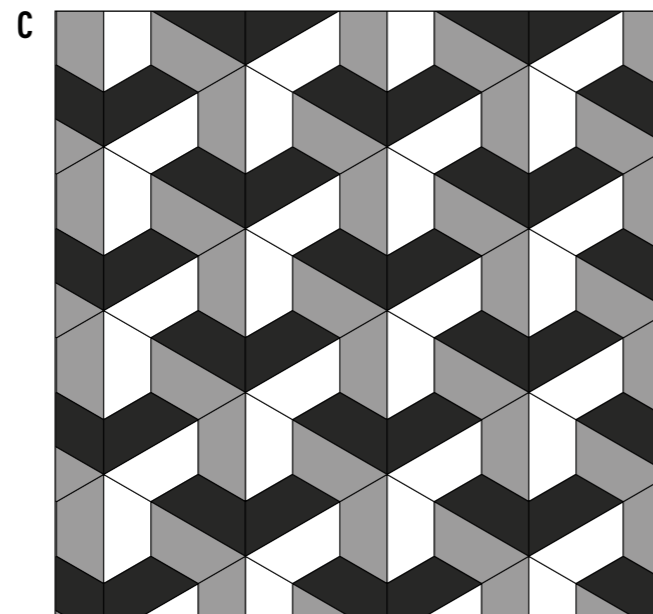
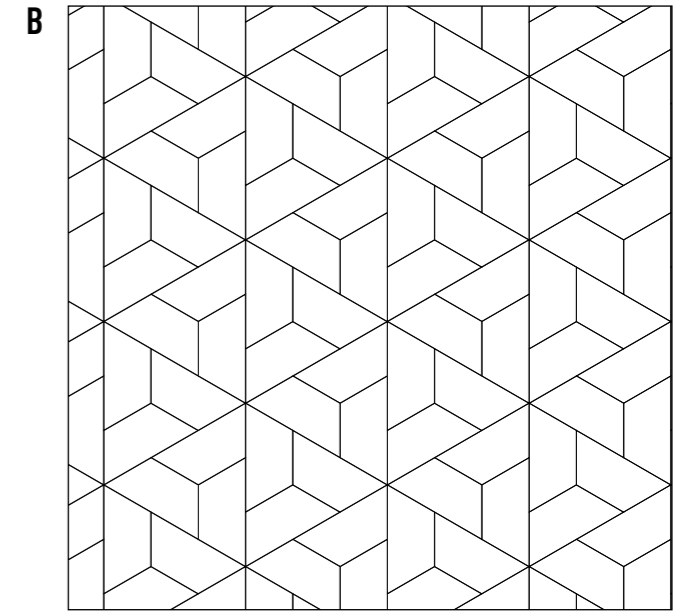
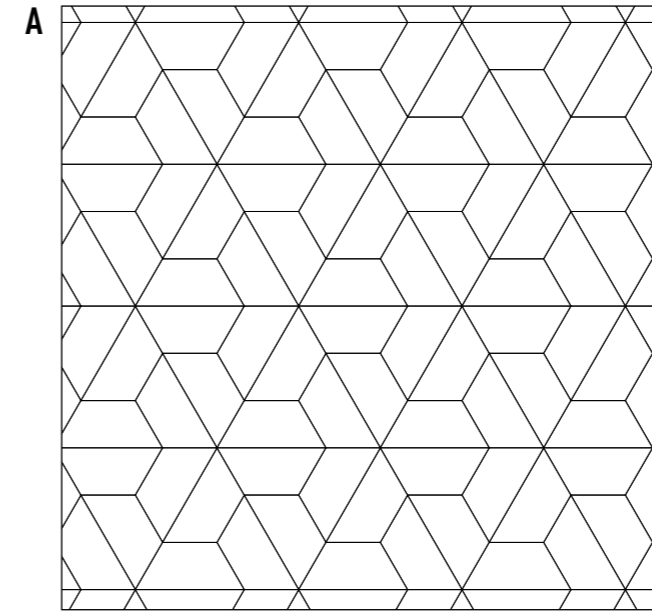
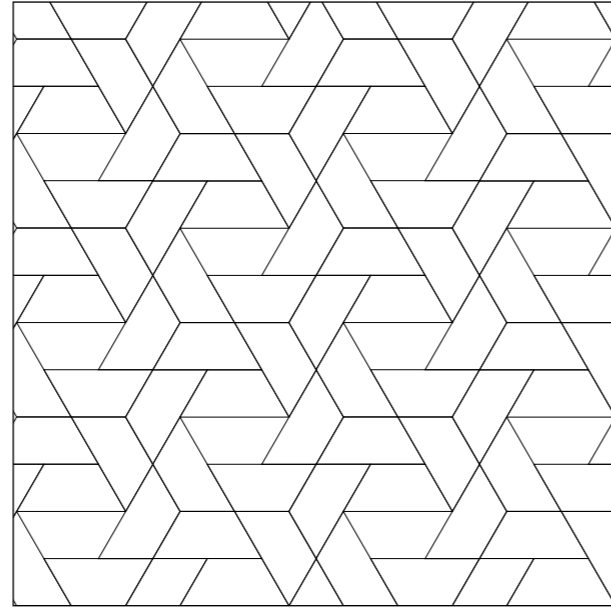
Ang. Quarter Round Trapez
3x3 1.2"x1.2"



Profilo Jolly Trapez
1x30 0.4"x12"



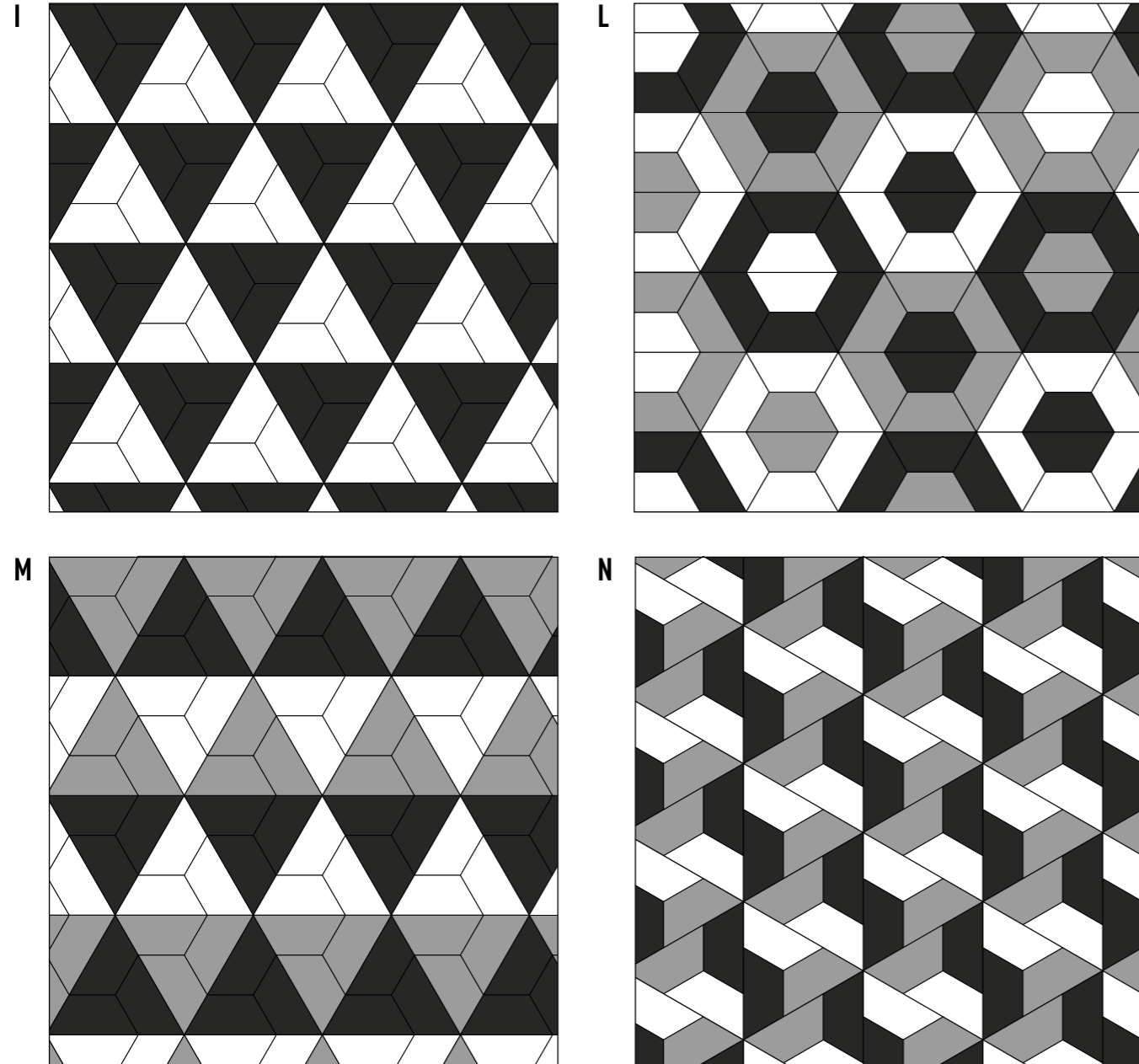
Ang. Profilo Jolly Trapez
1x1 0.4"x0.4"



Trapez matt

9 23x10 9"x4"

Soluzioni di posa | Laying patterns



Imballaggi | Packaging

Formato Size	Spessore/mm Thickness/mm	Pezzi/Scatola Pieces/Box	m ² /Scatola Sq.Mt/Box	Scatole/Pallet Box/Pallet	m ² /Pallet Sq.Mt/Pallet	kg/m ² Kg/Sq.Mt
23x10 9"x4"	9	23	0,39	120	46,8	20,3

Caratteristiche | Features

Le piastrelle della collezione "Trapez" sono in Gres porcellanato e secondo la norma EN 14411 appartengono al gruppo Bla.

Inoltre queste piastrelle rispondono ai requisiti imposti dal marchio CE.

Tiles of series "Trapez" are produced in porcelain stoneware and according to the current european set of rules, they belong to the Bla group (Rule EN 14411: 2012).

Moreover these tiles fulfil the necessary qualifications requested by the CE brand.

 TONALITE

via A. Costa 4/8
40019 Sant'Agata Bolognese (BO)
ITALY
telefono +39 051 957 253
fax +39 051 957 650
info@tonalite.it
www.tonalite.it

follow us       
& share with #tonalitetile