

SERIE *valle*

valle series



natural
unglazed



<1,25%



3<E>6%



4,4x10⁻⁶xK⁻¹



22 N/mm²



290 - 340 mm³



6 - 8



clase 5
class 5



Deslizam. CTE: clase 3
Slipping resist. CTE: class 3

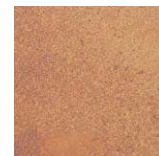


C

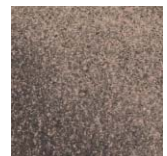


R10 - R11

Naturales *Natural Tiles*



Arán



Roncal

Bases Basic pieces

Arán 33x33

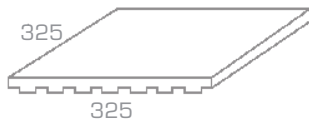


Roncal 33x33

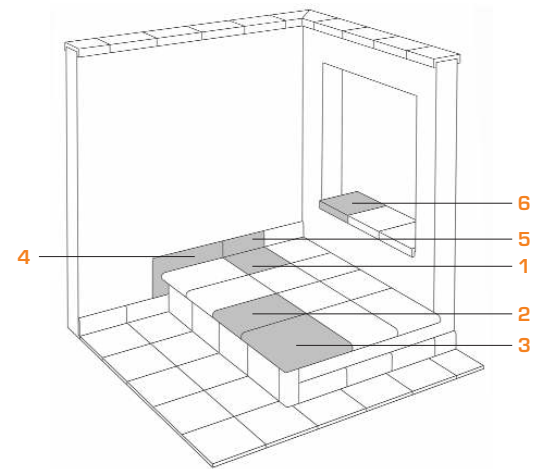


Base 33x33

Tile 33x33



Arán ■ Cod. 03059 **MC625**
 Roncal ■ Cod. 03066 **MC625**



- | | |
|----------------------|--------------------|
| 1 Base | Tile |
| 2 Peldaño | Stair-tread |
| 3 Esquina de peldaño | Stair-tread corner |
| 4 Zanquín | String |
| 5 Rodapié | Skirting board |
| 6 Vierteaguas | Wash |

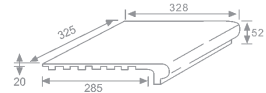
Artículo Item	Medidas (mm) Size (mm)	Espesor (mm) Thickness (mm)	U.M. *	U.M. *		Piezas Pieces		Peso (Kg) Weight (Kg)		
						U.M.*		U.M.*		
Base 33x33 Tile 33x33	325x325	16	M ² SQM	0,67	42,67	9	6	33	21,8	1400

* Unidad de Medida. Los artículos medidos en M² o ML se sirven contando la junta normal entre piezas
 * Unit of measure. Items measured in SQM or LM are delivered assuming average joint between pieces



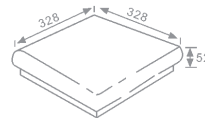
Piezas especiales Special pieces

Peldaño ref. 24-33
Stair-tread ref. 24-33



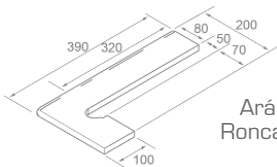
Arán ■ Cod. 03060 **PZ390**
Roncal ■ Cod. 03067 **PZ390**

Esquina de peldaño
Stair-tread corner



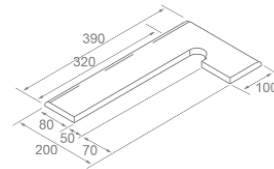
Arán ■ Cod. 03062 **PZ640**
Roncal ■ Cod. 03069 **PZ640**

Zanquín izda.
String left side



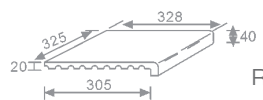
Arán ■ Cod. 03064 **PZ190**
Roncal ■ Cod. 03070 **PZ190**

Zanquín dcha.
String right side



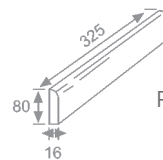
Arán ■ Cod. 03063 **PZ190**
Roncal ■ Cod. 03071 **PZ190**

Vierteaguas 33x33
Wash 33x33



Arán ■ Cod. 03065 **PZ345**
Roncal ■ Cod. 03072 **PZ345**

Rodapié 33
Skirting board 33



Arán ■ Cod. 03061 **ML190**
Roncal ■ Cod. 03068 **ML190**

Remate
Edge



Arán ■ Cod. 03358 **PZ455**
Roncal ■ Cod. 03361 **PZ455**

Anchura recomendada de la junta de colocación: 6 - 8 mm
A 6 - 8 mm wide installation joint is recommended.