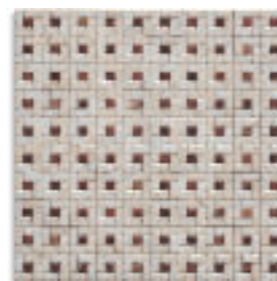




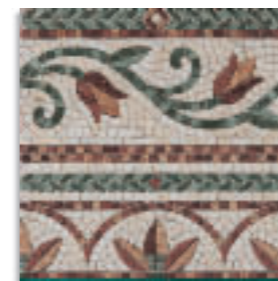
**epopeya** | 40x40 cm. (39,3x39,3 cm.)  
15.7x15.7 inches (15.5x15.5 inches)

PORCELANICO  
pulido rectificado  
polished rectified

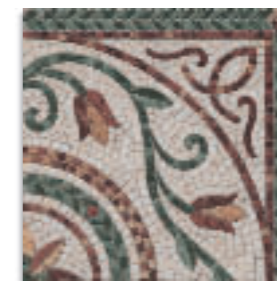
VIVES



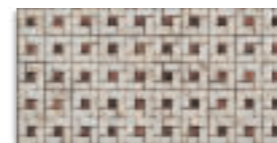
Caliope-PR  
G.167



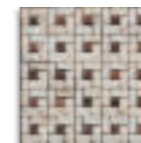
Cenefa Orfeo  
G.76



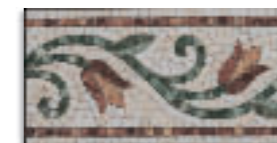
Cantonera Ciseo  
G.76



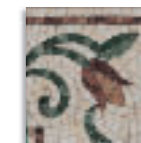
Cenefa Caliope 19,6x39,3 aprox.  
G.71



Cantonera Caliope  
19,6x19,6 aprox.  
G.67



Cenefa Capua 19,6x39,3 aprox.  
G.75



Cantonera Capua  
19,6x19,6 aprox.  
G.74



Tira Caliope 3,7x39,3 aprox.  
G.40



Taco Caliope  
3,7x3,7 aprox.  
G.12



formato/size	pz/pc	cj/bx	m <sup>2</sup> /sqm	ml/lm	kg
39,3x39,3 cm. 15.5x15.5 inches	caja/box	6	1	0,93	18,41
	palet/pallet	432	72	66,96	1325,52
39,3x39,3 cm. cenefa 15.5x15.5 inches frize	caja/box	4	1	·	1,57
39,3x39,3 cm. cantonera 15.5x15.5 inches border	caja/box	4	1	0,62	13,60

formato/size	pz/pc	cj/bx	m <sup>2</sup> /sqm	ml/lm	kg
3,7x39,3 cm. tira 1.5x15.5 inches	caja/box	50	1	0,70	12,90
3,7x3,7 cm. taco 1.5x1.5 inches dot	caja/box	40	1	0,04	1,52
19,6x39,3 cm. cenefa 7.7x15.5 inches frize	caja/box	10	1	·	3,93
19,6x19,6 cm. cantonera 7.7x7.7 inches border	caja/box	4	1	0,15	3,48