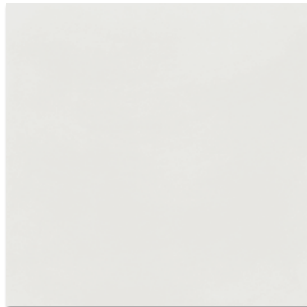


**POP TILE** 

VIVES

29,3x29,3 cm. 11.5x11.5 inches **Rectificado** Rectified

**Porcelánico** Porcelain tile Bla / ISO 13006 - G



Sixties-R Nácar  
G.156



Sixties-R Marfil  
G.156



Sixties-R Humo  
G.156



Sixties-R Marengo  
G.156



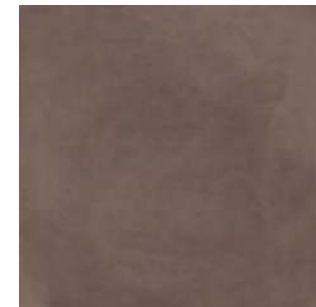
Sixties-R Celeste  
G.156



Sixties-R Ocre  
G.156



Sixties-R Ámbar  
G.156



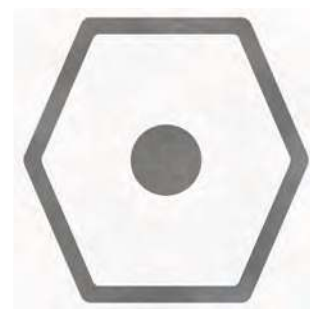
Sixties-R Chocolate  
G.156



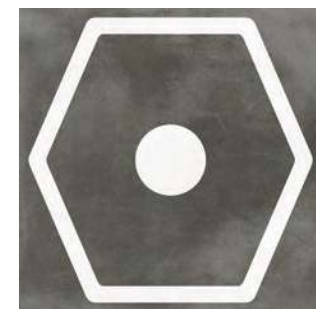
Harris-R Celeste  
G.172



Harris-R Marengo  
G.172



Janis-R Nácar  
G.172



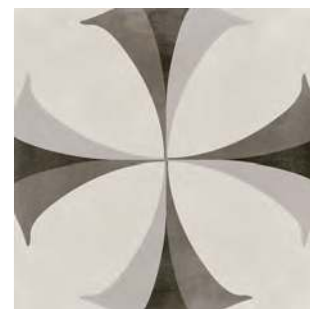
Janis-R Marengo  
G.172



Nimbin-R  
G.172



Afton-R  
G.172



Flaps-R  
G.172



(2) Leslie-R  
G.172

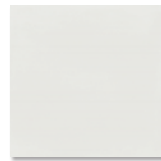
# POP TILE



VIVES

15x15 cm. 6.0x6.0 inches **Rectificado** Rectified

**Porcelánico** Porcelain tile Bla / ISO 13006 - G



Sixties-R Nacar  
G.196



Sixties-R Marfil  
G.196



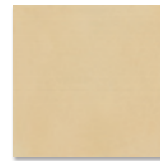
Sixties-R Humo  
G.196



Sixties-R Marengo  
G.196



Sixties-R Celeste  
G.196



Sixties-R Ocre  
G.196



Sixties-R Ámbar  
G.196



Sixties-R Chocolate  
G.196



Wha-R  
G.161



(1) Popart-R  
G.161



Carnegie-R  
G.161



Marquee-R  
G.161



(2) Ferus-R  
G.161



Fluxus-R  
G.161



Bethel-R  
G.161



Saville-R  
G.161



Cavern-R  
G.161



Bonnie-R  
G.161

(1) Este modelo está compuesto por diseños diferentes para combinar de modo alterno, se sirven en la misma caja.  
This model has different designs that are combined alternately, coming in the same box.

(2) Este modelo esta compuesto por un solo diseño con variantes de color para combinar de modo alterno, se sirven en la misma caja.  
This model have only one design with many colours that are combined alternately, coming in the same box.

**ANTIDESLIZANTE.** Con el fin de dar una mayor seguridad en aquellas áreas transitables, cuyas condiciones de humedad y pendientes son mayores de lo habitual, hemos realizado las pruebas de ensayo según las normas: UNE 41901:2017 EX, UNE 41902:2017 EX, DIN 51130, DCOF, BS 7976-2:2002. Para más información, consultar nuestro departamento técnico.

**SLIP RESISTANCE.** With the purpose of providing increased safety in areas of pedestrian foot traffic where moisture and/or slopes are greater than normal, we have carried out tests according to the norms: UNE 41901:2017 EX, UNE 41902:2017 EX, DIN 51130, DCOF, BS 7976-2:2002. For more information on this, contact our Technical Department.



POP TILE	CAJA / BOX							PALET / PALLET			
	+	FORMATOS	SIZE	PIEZAS / PIECES	M <sup>2</sup>	ML	KG	CAJA / BOX	M <sup>2</sup>	ML	KG
	8	15x15 cm.	6x6 inches	44	1	-	17,82	70	70	-	1247,40
	8,2	29,3x29,3 cm.	11.5x11.5 inches	11	0,94	-	17,82	64	60,41	-	1140,54
 Rodapié cortado y biselado Cut and Bevelled skirting tile	G.912	9,4x29,3 cm	3.7x11.5 inches	40	-	11,72	20,65	64	-	750,08	1321,60
 Peldaño / Step Tread	G.77	29,3x29,3 cm	11.5x11.5 inches	11	-	3,22	17,821	-	-	-	-
 Gradone	G.81	29,3x29,3 cm	11.5x11.5 inches	3	-	0,879	6,05	-	-	-	-



Nimbin-R · 29,3x29,3 cm.

VIVES





Leslie-R · 29,3x29,3 cm.

COLLECTION  
VIEW





Sixties-R Ocre / Afton-R - 29,3x29,3 cm.

VIVES





Sixties-R Marengo / Janis-R Marengo - 29,3x29,3 cm.

COLLECTION  
VIEW





Sixties-R Celeste / Cavern-R - 15x15 cm.

COLLECTION  
VIEW





Sixties-R Ocre / Saville-R · 15x15 cm.

COLLECTION  
VIEW





Bethel-R · 15x15 cm.

VIVES





Sixties-R Humo / Bonnie-R · 15x15 cm.

VIVES

